

DJERBA X

CONTENTS

Contents.....	2
Introduction.....	3
Copyright.....	4
Credits.....	4
System Requirements.....	4
Installation.....	5
Support.....	5
General.....	6
Airport information.....	7
Places to visit.....	8
FS9 settings.....	9
FSX settings.....	9
F.A.Q.....	11



INTRODUCTION

The island of Djerba, located in the Gulf of Gabes off the coast of Tunisia, is not only the largest island of North Africa but also a popular destination for tourists, scuba divers and water sports enthusiasts. With just over 500 square kilometers in size, tourists have a short travel from the airport to their hotel after landing at the only airport of the island, Djerba-Zarzis.

Now that the political situation in Tunisia has calmed down after the Arab Spring, it is about time to pay this wonderful holiday destination a visit. With this add-on you can finally fly to Djerba, so fasten your seat belts, bring your seat back in an upright position and enjoy the flight!



COPYRIGHT

This manual and the software shall not be copied or shared in any way without the explicit permission of FSDG or its developers.

Copyright © 2012 FlightSim Development Group. All rights reserved.

Microsoft Windows, and Flight Simulator are registered trademarks or trademarks of Microsoft Corporation in the United States and/or other Countries. All trademarks and brand names are trademarks or registered trademarks of the respective owners.

For more information visit www.flightsimdevelopmentgroup.com.

CREDITS

Idea + concept: Thorsten Reichert

Models + Textures: Emilios Gemenetzidis, Thorsten Reichert

Installer: SimMarket

Testing: A big thank you to our beta testers, who helped making a good product even better!

The developers wish to dedicate this add-on to the chief of police at the airport of Djerba, who luckily failed to delete the images on our camera after our photo tour. Only from his failure this add-on could be created.

SYSTEM REQUIREMENTS

- Intel Core 2 Duo E6850 CPU (Core 2 Quad advised)
- 2 GB RAM
- Direct X 9 compatible Graphics Card with 512 MB or higher
- Microsoft FSX (SP2 or Acceleration)
- Windows XP, Windows VISTA, Windows 7

INSTALLATION

To install this add-on simply run the downloaded setup and follow the instructions on the screen. On successful completion of the installation process you should find a new area in your FSX scenery library (FSDG – Djerba X) or, in case of FS9, 2 new areas, which should automatically be in the correct order:

“FSDG – Djerba - Priority 1” and “FSDG – Djerba - Priority 2”

Do not disable or change the order of these areas as this would affect the airport scenery.

To uninstall this add-on use the Windows control panel.

If you have any trouble with this, please read the frequently asked questions at the end of this manual or contact our support.

SUPPORT

Support is important to us. If you have any issues or questions concerning our products don't hesitate to visit our support forum:

<http://forum.flightsimdevelopment.com>



GENERAL

Djerba might not be as well-known as other tourist destinations in the Mediterranean like Mallorca, Cyprus or Crete, but it certainly is a favorite destination for water enthusiasts as well as sunbathers, who visit the island by ship or by aircraft. As the number of visitors more and more increased over the last two decades, the airport of Djerba Zarzis rose from a small regional airport to a tourist destination. It became inevitable to expand the terminal and add more gates in order to handle airliners arriving from all across Europe and the Mediterranean. You can still see the traces of the old, smaller airport if you look at the apron surfaces, the lines or the runway.

Today, Djerba-Zarzis handles more than 2,5 million passengers a year and is a regular destination for Air Berlin, Thomas Cook, Transavia, Tunisair and several other carriers.

Unlike some recently built mega airports in Africa or the Middle East, Zarzis gives its visitors the instantaneous feeling of being in Africa. The typical architecture, Arabic letters, the solar panels and domes on flat roofs, palms and rusty fences, in short the “African spirit” is perceptible everywhere.

The airport of Djerba is much more than a gateway to your favorite diving spot – it's a place with its own charm.



AIRPORT INFORMATION

IATA:	DJE
ICAO:	DTTJ
Lat/Long:	N 33° 52' 30", E 10° 46' 32"
Magnetic Variation:	1.0
Airport Light Intensity:	Medium
Fuel Available:	AVGAS JET
Elevation (ft):	19
Runway (ft):	10152 x 150
Approach:	120.30
Tower:	118.15
NDB:	371 (JER)
VOR/DME:	112.20 (JBA)
ILS Rwy 09:	109.50

Airport Charts are freely accessible on the internet. Just google "DTTJ charts".



PLACES TO VISIT

If you installed Djerba X for FSX you will be able to explore much more than the airport itself. The whole island is covered with realistic terrain, coastlines, vegetation, streets, harbors, bays, landmarks and another airport!

In the south of the island you will find a rather small airfield right within a sandy bay and close to a popular kite-surfing spot. In order to start a flight or easily find the airfield you can select it in FSX using the fictional ICAO code "DTS1".

There are popular diving spots around the island, mainly in the northeast, where some ship wrecks from WWI attract lots of scuba divers. You can find their diving boats not too far off the coast.



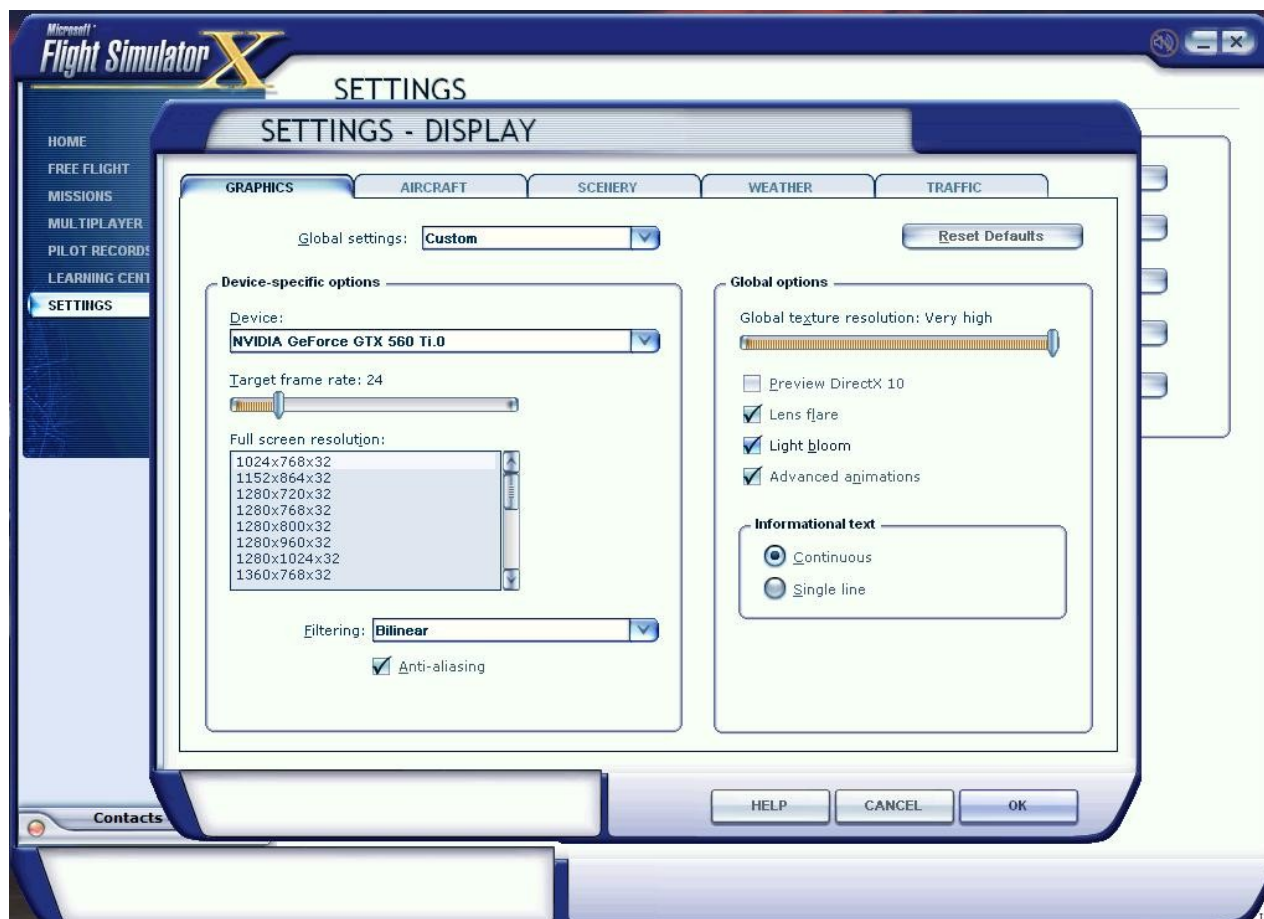
FS9 SETTINGS

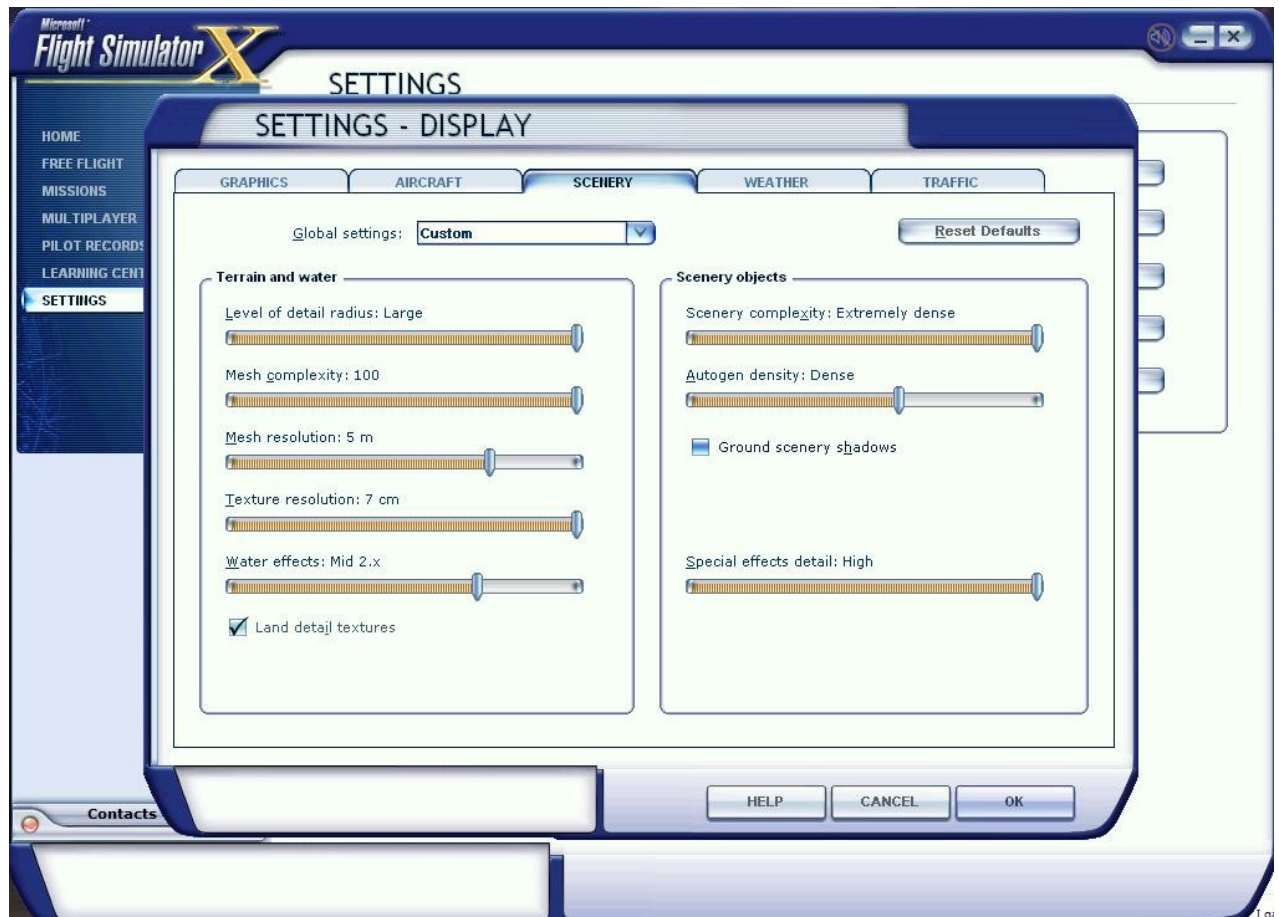
FS9 usually offers very good framerates and performance on today's PC generation. Our testers and users report that almost all of them can run FS9 with maximum graphic and scenery settings. We advise you to try this first. If you experience bad framerates or stutters, reduce the air traffic settings, the autogen or set the scenery slider to "dense" or "normal".

FSX SETTINGS

In order to change your scenery settings, go to Settings -> Display
Note that these settings will influence the quality of the scenery. The higher the settings the more details will be visible. But keep in mind that framerate and overall performance might decrease depending on your PC system.

We suggest trying these settings to get the best visual results in FSX:





If you use an AI traffic add-on like MyTraffic or Ultimate Traffic you will have realistic air traffic at Djerba airport. To achieve the most realistic experience you should set the airline density and general aviation density to 50-70%.



F.A.Q.

Q: Is this add-on DX10 compatible? (FSX)

A: Like most scenery add-ons, Djerba X cannot be used with the FSX DX10-preview mode.

Q: Is this add-on compatible with other add-ons like UTX or FS Global?

A: There should be no problem with any other add-on.

Q: There seem to be issues with the airport lighting at day/night transitions. Is this normal?

A: No, but it isn't curable. FSX sometimes has its own ways of switching day/night textures. If you face any texture or scenery problems, open the scenery library and click OK (or use the "refresh scenery" shortcut) to reload scenery and textures.

Q: AI aircraft vanish after landing, get stuck before take-off or turn around on the runway. How can I fix this?

A: This is default behavior (mainly FSX) that cannot be fixed by the scenery. We included some tricks though that should prevent AI aircraft from using wrong taxiways and turning on the runway.

Q: The scenery library is not updated automatically on installation of the add-on. How can I fix this?

A: If you use Windows Vista or Windows 7 you are strongly advised to start the setup as administrator (right-click in Win 7 and "run as administrator") and disable the User Account Control. Reinstall the add-on to make sure the setup added the Djerba area to the scenery library in FS9/FSX.

Q: I have technical problems with installing or running this add-on. Can you help me?

A: Yes! Please contact us at www.flightsimdevelopmentgroup.com.