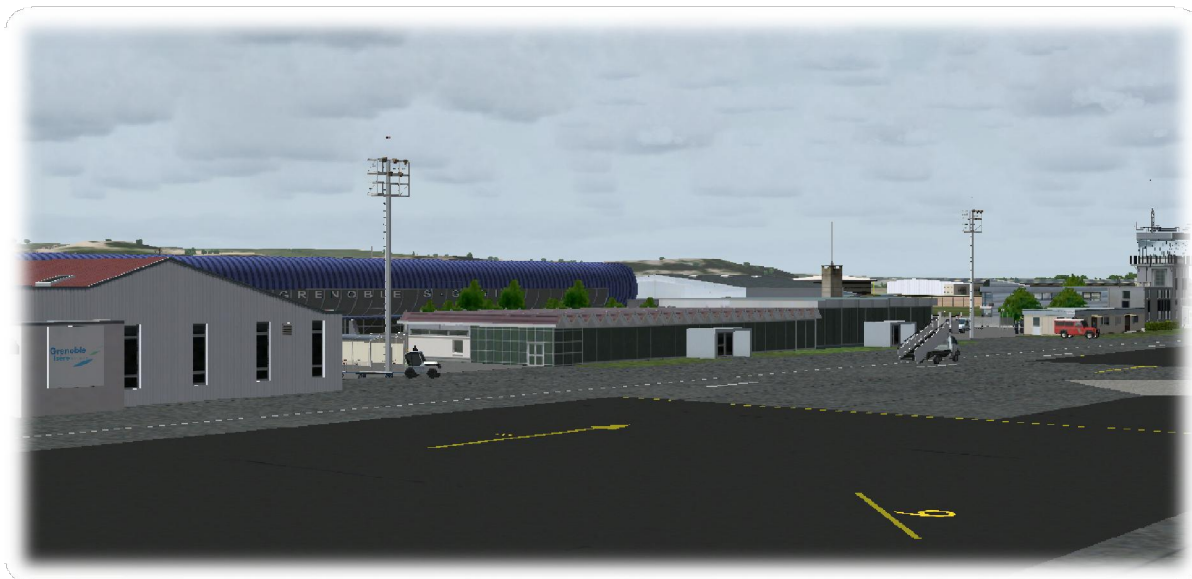




# **GRENOBLE ISÈRE AIRPORT**

for Microsoft Flight Simulator 2004



## Contents

Contents .....	2
Copyright stuff .....	3
From the Author.....	4
Some facts about the airport .....	4
About FranceVFR.....	4
What have you just bought.....	5
NAVAIDS.....	5
Installation .....	6
Un-installation.....	8
Important remarks.....	9
Level of detail of the scenery .....	9
Terrain appearance .....	9
Runway lights.....	9
Apron and parking locations.....	9
Hangar doors.....	9
Support.....	10
Credits.....	11

## Copyright stuff

Let's get the 'small print' over with first. We know that anything in this big bad world can be reproduced within minutes, no matter the copy protection, no matter what we write or how much we threaten, so the following text is just meant for decent people to read. The ones we know that will take it to heart. The ones that have just PURCHASED this product!! In other words: YOU! (And, by the way, thank you for that!!).

All FSAddon.com Publishing products are commercial products and copyrighted as such. This means that no product, or any part of it, may be copied, reproduced or disassembled in any way, nor published in any way and by any means, without written agreement from FSAddon Publishing. The same holds true for any registration or license key or any other means of product protection.

The product is provided 'as is' and the publisher, author(s) and distributor(s) do not accept any liability for any damages of any kind resulting from the use of the product in any way.

**This product should not be used for real world training or other real world usage of any kind.**

After purchasing this product, Grenoble Isère Airport for FS2004 by Antonio Totingue, you may **install and use it on ONE computer only** for your private use. And you know what? If you really want to make a backup copy **for safety reasons only** and promise NOT to use it for anything else (like giving it to your best friend), we don't even blame you!

'Grenoble Isère Airport' base software and artwork is copyright of **Antonio Totingue**.  
The documentation and accompanying websites/webpages are copyright of **François Dumas**.  
All publishing rights reside with **FSAddon Publishing**.  
FlightAlpesNord is copyright of **FranceVFR**.  
'Flight Simulator 2004: A Century of Flight' is copyright of **Microsoft**

Now let's get down to business.....

## From the Author

Thank you for buying the scenery of Grenoble Isère airport for Microsoft Flight Simulator 2004. I hope that you'll have a lot of pleasure landing at Grenoble Isère and that this place will become one of your favorite destinations in flight simulation.

To build the scenery, I engaged all care and attention to details: the objective was to bring to the scenery as much realism as possible, nothing is invented!

A significant detail is that I built it upon the excellent FranceVFR photo/mesh scenery add-on FlightAlpesNord. That means it is highly recommended (but not mandatory) to have and install this scenery too, so you can get the maximum benefit from 'Grenoble Isère' AND increase the reality-level of your FS2004 to great heights for the region !

## Some facts about the airport

Grenoble Isère Airport is a sister airport of Lyon Saint-Exupéry Airport. It is situated at the heart of the Rhône-Alpes region, one of the most populated regions in France. Its history begins in the Sixties, when it was built especially for the 1968 Winter Olympics. For a long time the airport has been called "Grenoble Saint Geoirs", but in 2004 it was renamed as "Grenoble Isère", when a private enterprise took a concession to manage it.

The average annual number of passengers for the last 5 years is about 270 000. It has an annual growth of about 15%. Although there are not a lot of regular flights, in winter the airport becomes a busy place, receiving a great number of charter flights with passengers coming to enjoy skiing in the Alps. Grenoble Isère also attracts some low-cost companies (like EasyJet and Ryanair).

Today the airport has a runway of 3050 m and it can be used by almost all types of aircraft. The apron is able to accommodate ten medium range aircraft and some extensions are planned for future. You can also find a flying school (Aeralp) and a Center of aeronautics education (CEFA) at Grenoble Isère.

The scenery of Grenoble Isère airport for Microsoft Flight Simulator represents the airport as it was in summer 2007.

To build your simulation flight plans, you can find all necessary data and charts at the French government AIP site of Aeronautical Information Publications (the English language version):

<http://www.sia.aviation-civile.gouv.fr/aip/enligne/UK/home.htm>

Type LFLS in the ICAO code field and press 'OK' to display (or download) the information in PDF format (you will need the freely available Acrobat Reader software to display the text on your PC).

## About FranceVFR

FranceVFR is a Flight Simulator scenery company specializing in making France more realistic on your monitor. They are in the process of providing a base texture made of aerial photos for the entire France. Recently they have added autogen packs and now also airfields to the mix.

If you want to enjoy VFR flying with the highest level of photo-realism, then FranceVFR's products are at the top of the market. We highly recommend their products !

Their website and shop: [www.francevfr.com](http://www.francevfr.com)

## What have you just bought

A scenery for FS2004 that is completely compatible with the photo terrain scenery '**FlightAlpesNord**' produced by FranceVFR.

100% of airport buildings are modeled, without any exception. The most important buildings surrounding the airport are included into the scenery as well.

All buildings have photo textures, with the exception of some at the inside of the airport, but in this case the photo textures are reconstructed and based on real samples.

You can begin to prepare your flight simulation inside a hangar!

Many of the hangar doors are **dynamic** during daytime and will open when you approach them with your aircraft! You need to be **fairly close** for the doors to be activated!

The scenery has **many more animations**: airport vehicles and traffic of buses and cars outside of the airport move along the roads. The airport equipment (fire trucks, service vehicles) change their position depending on the time of the day.

During the year, the cars parked in front of the terminal change their number and position.

And several of the entrance gates are opening and closing too, should you want to visit the airport by car (the principle is the same as for the hangar doors)!

The real runway of Grenoble Isère airport is banked (1224ft at RW09 side and 1302ft at RW27 side). This detail is almost impossible to create in Flight Simulator, that is why we flattened the terrain and the altitude of the whole runway in the scenery is 1302ft.

## NAVAIDS

Type	ID	FREQ	Distance
Locator	EG	397 kHz	25 NM
Locator	WS	291 kHz	25 NM
ILS/DME RW09 (I.E.2)	SG	109.3 MHz	25 NM (DME)



## Installation

### Minimum system requirements:

- Pentium IV 1,8 Ghz or similar
- 55 Mb of free hard disk space
- 256 Mb RAM
- 3D Graphics adapter with 64 Mb RAM
- Microsoft Flight Simulator 2004 preinstalled

### Recommended system:

- Pentium IV or equivalent, more powerful than 1,8 Ghz
- 512 Mb RAM or higher
- Graphics adapter Nvidia GeForce7xxx of higher with 256 Mb RAM or more or equivalent

As usual for FSAddon Publishing products we have included an **automatic installer** for you. Since Grenoble-Isère works best in conjunction with FranceVFR's FlightAlpesNord add-on, the installer will look for that package too.

Here is what will happen:

- The installer should find the path to your FS9 installation. If not, please indicate the proper **path to FS9** yourself
- if you have FlightAlpesNord installed, the installer will assume it is in the 'default' location, i.e. in the ..... FS9\Addon scenery\FlightAlpesNordBP folder
- it will REPLACE a number of the FlightAlpes files with new ones, and store the replaced files in a \Backup folder
- It will then install the main files in ....FS9\FSAddon\Grenoble for you
- AND it will make the necessary changes in the Scenery Library

If you do NOT have FlightAlpes installed, we will ONLY install Grenoble-Isère of course.

Last but not least, if you have installed **FlightAlpes in some OTHER location**, then we cannot automatically install the replacement files for you, sorry!!

After installation please check your Scenery Library.

WITH FlightAlpesNord installed, you should see the following..... Please **UNCHECK** the LFLS\_LC file (the landclass entry is only needed for the default MS scenery)

Enabled	Scenery Area	Priority
<input checked="" type="checkbox"/>	LFLS_Grenoble-Isere	1
<input type="checkbox"/>	LFLS_LC	2
<input checked="" type="checkbox"/>	FlightAlpes BasePack Nord	3
<input checked="" type="checkbox"/>	FlightRiviera BasePack	4
<input checked="" type="checkbox"/>	FlightAlpes BasePack Sud	5
<input type="checkbox"/>	LLH5 Courchevel	6
<input type="checkbox"/>	LLH4 Megeve	7
<input type="checkbox"/>	LLH1 et 2	8
<input checked="" type="checkbox"/>	Alaska Glacier Bay Scenery	9
<input type="checkbox"/>	LLH5_Janclass	10
<input checked="" type="checkbox"/>	Alaska Glacier Bay Landscape	11
<input checked="" type="checkbox"/>	StMartin-StBarth	12
<input checked="" type="checkbox"/>	VicPlus - Higher Priority	13
<input checked="" type="checkbox"/>	VicPlus - Lower Priority	14

If you don't have the scenery of FranceVFR then your Scenery Library window should look as shown below:

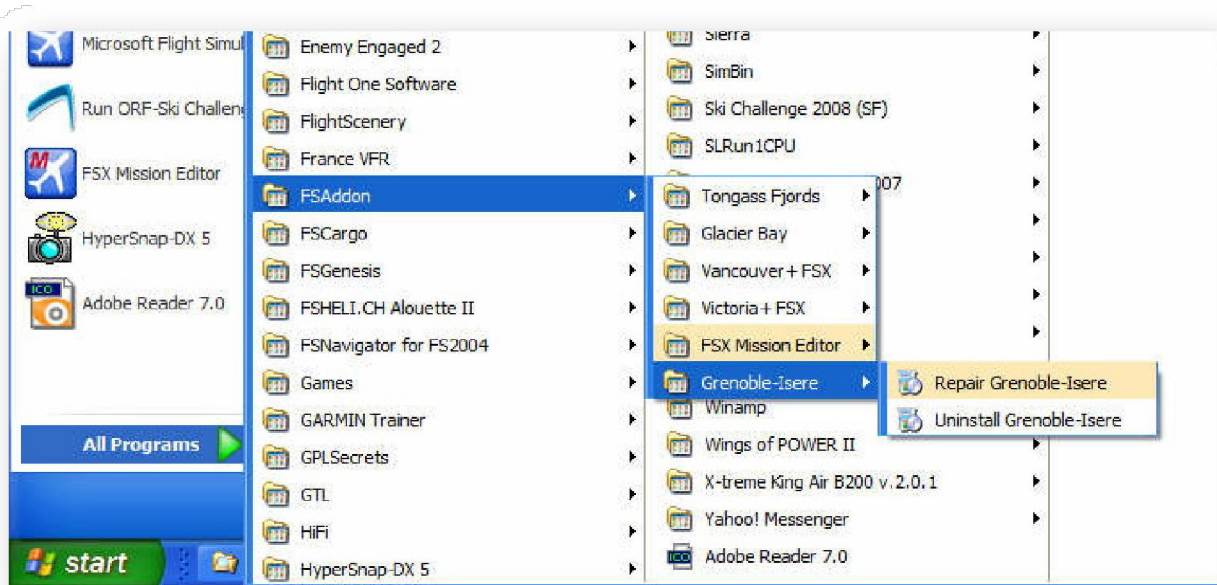
Enabled	Scenery Area	Priority
<input checked="" type="checkbox"/>	LFLS_Grenoble-Isere	1
<input checked="" type="checkbox"/>	LFLS_LC	2
<input checked="" type="checkbox"/>	Addon Scenery	3
<input checked="" type="checkbox"/>	Propeller Objects	4
<input checked="" type="checkbox"/>	Vehicle Libraries	5
<input checked="" type="checkbox"/>	Generic Libraries	6
<input checked="" type="checkbox"/>	South America	7
<input checked="" type="checkbox"/>	Oceania	8
<input checked="" type="checkbox"/>	Western North America	9
<input checked="" type="checkbox"/>	Eastern North America	10
<input checked="" type="checkbox"/>	Central North America	11
<input checked="" type="checkbox"/>	Western Europe	12
<input checked="" type="checkbox"/>	Eastern Europe	13
<input checked="" type="checkbox"/>	Australia	14
<input checked="" type="checkbox"/>	Asia	15
<input checked="" type="checkbox"/>	Africa	16

After changing things in the Scenery Library you will NEED to RESTART the simulator to make the changes active.

## Un-installation

You can Un-install Grenoble-Isère by selecting Uninstall Grenoble-Isère via the Start option in the left-most bottom corner of the screen, as shown:

You will need to **DELETE** the entries from the Scenery Library yourself afterwards !





## Important remarks

### Level of detail of the scenery

If you want to see all the details existing in the scenery, it is necessary to adjust the **scenery complexity** in display settings of your Flight Simulator to "**Very dense**" or "**Extremely dense**". If the performance of your computer doesn't allow you to display all the details, you should reduce the scenery complexity to "Normal"; the values lower than "Normal" will only show the most important objects of the scenery.

In order to see the animated vehicles, you must check the box "**Add-on dynamic scenery**" and adjust the bar below it to "**Dense**" or higher.

If you don't want to see people at the airport, you can change the extension of the file LFLS\_12.bgl to LFLS\_12.bak which you'll find in the folder of the scenery.

### Terrain appearance

It is **very important** to adjust the value of the line **TERRAIN\_MAX\_VERTEX\_LEVEL** to **21** in the file **fs9.cfg** (you can find it in the folder *[local hard drive]:\Documents and settings\[your profile]\Application data\Microsoft\FS9*. If this parameter is other than 21, the terrain around the airport may be different of the one used during the creation of the scenery.

### Runway lights

Normally, the lights in the airport (runway, taxiway, spotlights...) will switch on automatically in dusk and switch off when dawn ends. But they are not switched on automatically in low visibility weather conditions. **If you want to switch on runway lights, you can do it when you wish by adjusting your NAV2 frequency to 116,95Mhz.**

### Apron and parking locations

Grenoble Isère airport has three apron areas, according to the type and the affiliation of the aircraft.

The parking locations of the Center of aeronautics education (CEFA) are referred in the simulator as N parking (points N parking 1-16). The points of LIMA apron are referred as S parking (points S parking 1-18).

The main apron is referred as Gates (Gates 1-16, where Gates 1-4 are Small Gates and Gates 5-16 are Medium Gates). So, according to the type of your aircraft, choose the points where you want to start your simulation.

### Hangar doors

You can also start your simulation placing your aircraft in a hangar, because the doors of several hangars will automatically open when you approach them.

To start in a hangar of CEFA, choose the Docks 17-22; to start in one of the two open hangars of LIMA apron, choose the Docks 23-25.

Attention, hangar doors are closed at night! And don't forget to choose an aircraft that matches hangar dimensions, because they are not very spacious!

Here are some screenshots of the hangars that open:



## Support

If you need any support in installing or using **Grenoble-Isère**, you can get it in different ways:

**Register on the FSAddon.eu forums** (go here: <http://forums.fsaddon.eu/index.php> and click on "Register") and then go to the **Grenoble-Isère Support Forum** which you can find by clicking here: <http://forums.fsaddon.eu/viewforum.php?f=24>

1) You **MUST** register before you can write messages. On **Grenoble-Isère Support Forum** you can communicate with the author of the scenery in English, in French or in Russian.

OR

2) For **COMMERCIAL ISSUES** write us an email: [francois@fssupport.com](mailto:francois@fssupport.com)

OR

3) Write to **simMarket support** (if you bought it there) : [https://secure.simmarket.com/ticket\\_create.php](https://secure.simmarket.com/ticket_create.php)

We believe that support of a product, and especially products released for such a specialized audience as flight simmers, is of the utmost importance. Being flightsim freaks ourselves you can be assured that support has our fullest attention..... Although we do not imagine you would need much with this product.

In any case, even if you just want to tell us what you think you are welcome on the **FSAddon Forums** and on the **simFlight Forums**. There you will also find a bunch of like-minded flight simmers to chat with you about this title, and about just anything else flightsim related. Give it a try!

<http://forums.fsaddon.eu/viewforum.php?f=24>

## Credits

Scenery design, 3D objects, textures, etc.

**Antonio Totingue**

Marketing, distribution, installation

**FSAddon Publishing**

Providing a free copy of FlightAlpesNord

**FranceVFR**

Beta testers  
In no particular order

**Aaron Meyers, Lars P Hammer, Rainer Duda, Tom Constantine, Jaap van Hees,  
Barak Palesznicki, Andy Sedgley, Andrew Barter, Al Stiff, Carlos Zegarra Ayesta,  
Pär Bergqvist, 'Heli', John Mensink, Shigeru Kojima, Christian Mohr,  
Paul Kane, Eric Norton, Dave Sybiak**

In addition we also like to thank

**Desperado (Igor),  
Scot Fraser,  
Developers of the software used to create the scenery**  
(Gmax, AFCAD, MDL Tweaker II, Library Creator XML and others)  
and

**Olga**

Microsoft, Flight Simulator and Windows are trademarks of their respective owners

All logos, trademarks, brand names and so on, seen in the scenery of Grenoble Isère airport, are property of their respective owners and are present in the scenery only to paint an image of the real place in the flight simulator.