

Northern Microlights Installation

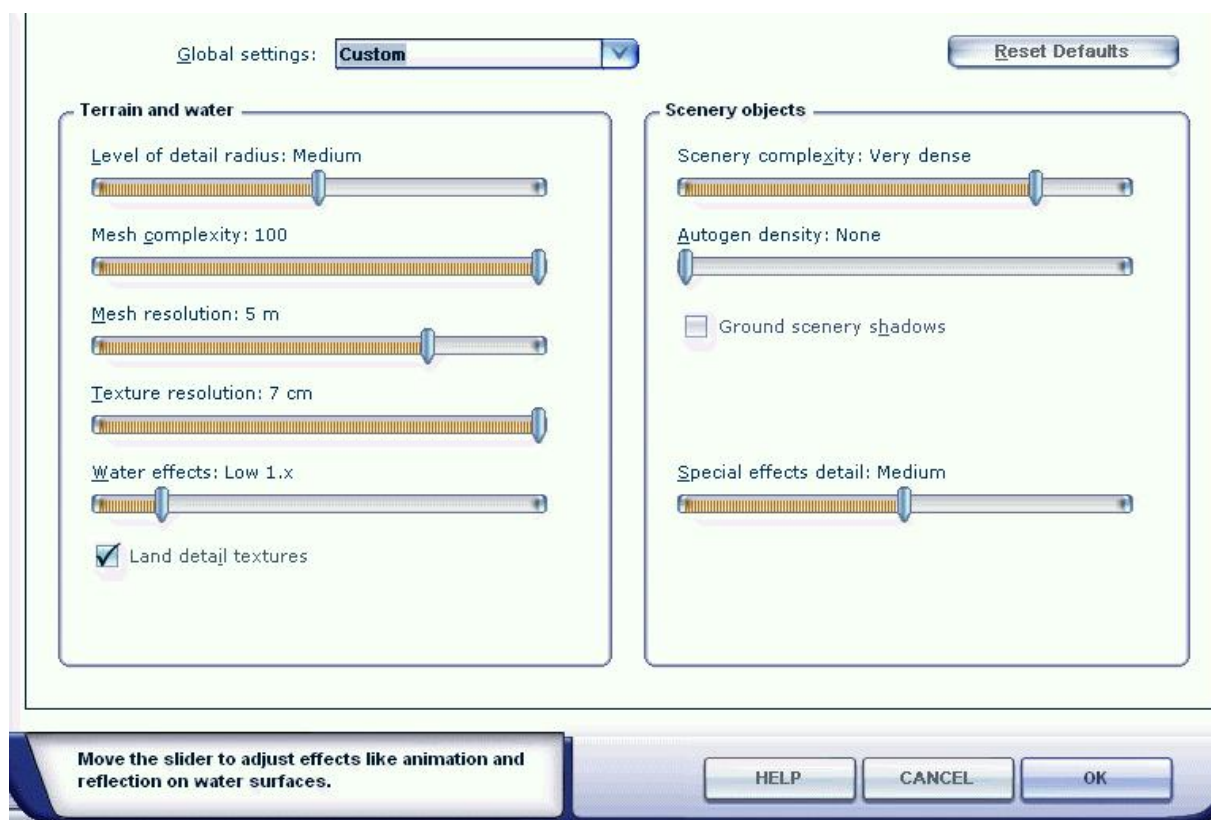
The auto-installer will take you through its paces and help you install the NML scenery.

Just double click on the exe file you downloaded from the distributor or found on the DVD.

If you have properly installed FSX on your PC, the installer will find it and automatically install NML in the correct places. You can of course point to the FSX folder yourself if you have moved it to some other place.

The 2 pdf files with the user manual and airfield guide will be installed into the FSAddon folder with a link on your desktop.

- I would advise to use the following settings:
In the scenery settings SCENERY COMPLEXITY should be set to 'DENSE' or above.
- Due to the bumpy nature of the fields I recommend removing 'Crash Detect' by pressing 'Aircraft'- 'Realism Settings'- 'Ignore Crashes and Damage'.
- It is important to make sure that 'LAND DETAIL TEXTURES' is selected as this makes a real difference.



IMPORTANT

When accessing the 'GO TO AIRPORT' menu in FSX select United-Kingdom. Note the hyphen. The default UK has no – hyphen.

I would strongly recommend purchasing a copy of Acceleration as I have placed more scenery objects from this.

The scenery was designed using Horizon's Part-3 Version-1, You may find some anomalies when using version-2 of Horizon's VFR Scenery or Just-Flights VFR Scenery as the terrain mesh differs slightly so some of the walls/fences may be mis-aligned.

This software will in no way damage your computer but by I cannot be held responsible if you think it has caused problems.

Any problems or requests please e-mail me at neil.birch@ntlworld.com

With kind regards,
Neil Birch
Developer